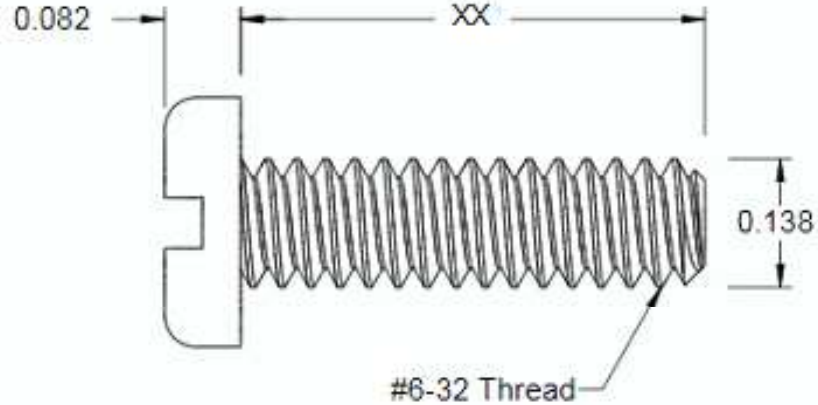
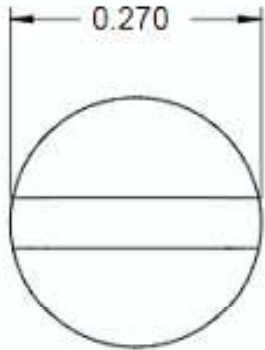



This drawing and the information contained herein are the confidential and proprietary property of Global Supply LLC



| PART NUMBER | LENGTH |
|-------------|--------|
| 10632P025PC | 1/4 |
| 10632P037PC | 3/8 |
| 10632P050PC | 1/2 |
| 10632P062PC | 5/8 |
| 10632P075PC | 3/4 |
| 10632P100PC | 1 |
| | |
| | |
| | |
| | |
| | |
| | |
| | |



NOTES:
 1. INTERPRET DRAWINGS PER ASME Y14.5M-1994 STANDARD.
 2. DIMENSIONS & TOLERANCES PER ANSI/ASME B18.6.3.
 3. ROHS AND REACH COMPLIANT

| | | | | | | | | | | | |
|---|-----------------|------------------|-----------------------------------|--|---|-----|-----------|--------------|--|--------------------|--|
| DRAWING SCALE: | | MATERIAL: | | DESCRIPTION: | | | | | | | |
| STANDARD | | NYLON | | 6-32 SLOTTED PAN HEAD MACHINE SCREW | | | | | | | |
| TOLERANCES: <i>Unless specified otherwise, all dimensions are in inches</i> | | FINISH: | | PART NUMBER: | | | | | | | |
| <table border="0"> <tr> <td>x.xxx</td> <td>+/- 0.005</td> </tr> <tr> <td>x.xx</td> <td>+/- 0.010</td> </tr> <tr> <td>x.x</td> <td>+/- 0.010</td> </tr> </table> | | x.xxx | +/- 0.005 | x.xx | +/- 0.010 | x.x | +/- 0.010 | PLAIN | | 10632P0XXPC | |
| x.xxx | +/- 0.005 | | | | | | | | | | |
| x.xx | +/- 0.010 | | | | | | | | | | |
| x.x | +/- 0.010 | | | | | | | | | | |
| DRAWN BY: | L CLARY | | FSCM No. 67012 | |  Global Supply LLC WORLDWIDE SUPPLIER OF ELECTRONIC HARDWARE, FASTENERS & COMPONENTS <small>500 Division Street, Campbell, CA 95008-6906 Tel: 408 960 0370 Fax: 408 960 0375 Web: www.globalsupply.com</small> | | | | | | |
| REV: | APPROVAL | DATE: | | | | | | | | | |
| INITIAL RELEASE | LJA | Aug 30, 2018 | | | | | | | | | |
| | | | | | | | | | | | |
| | | | | | | | | | | | |
| | | | ECCN | | | | | | | | |
| | | | EAR99 = NLR (No License Required) | | | | | | | | |