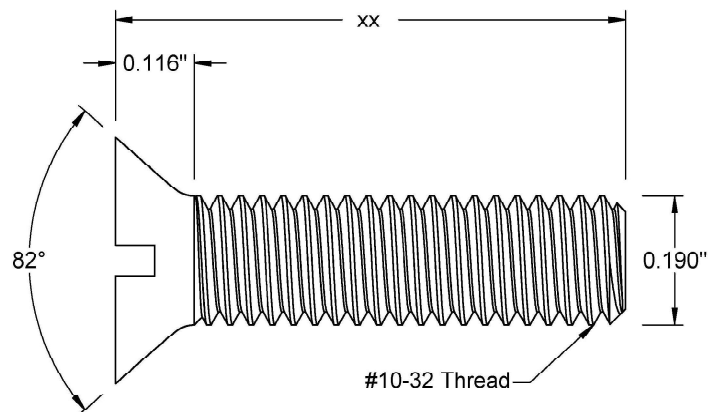
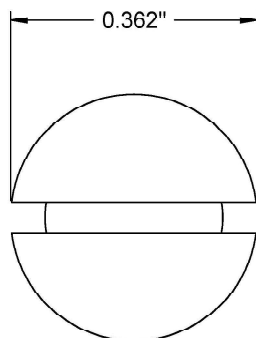



This drawing and the information contained herein are the confidential and proprietary property of Global Supply LLC



PART NUMBER	LENGTH
10F8MP8T	1/8
10F12MP8T	3/16
10F16MP8T	1/4
10F20MP8T	5/16
10F24MP8T	3/8
10F28MP8T	7/16
10F32MP8T	1/2
10F36MP8T	9/16
10F40MP8T	5/8
10F48MP8T	3/4
10F56MP8T	7/8
10F64MP8T	1

#### NOTES:

1. INTERPRET DRAWINGS PER ASME Y14.5M-1994 STANDARD.
2. DIMENSIONS & TOLERANCES PER ANSI/ASME B18.6.3
3. ROHS AND REACH COMPLIANT

DRAWING SCALE:			MATERIAL:		DESCRIPTION:	
STANDARD			TITANIUM		#10-32 FLAT PHILLIPS 82° HEAD MACHINE SCREW	
TOLERANCES: <i>Unless specified otherwise, all dimensions are in inches</i>		<div>x.xxx +/- 0.005</div> <div>x.xx +/- 0.010</div> <div>x.x +/- 0.010</div>	FINISH:		PART NUMBER:	
			PLAIN		10FXXMP8T	
DRAWN BY:		L.CLARY		FSCM No.		<div><div>Global Supply LLC</div><div>WORLDWIDE SUPPLIER OF ELECTRONIC HARDWARE, FASTENERS &amp; COMPONENTS</div><div>500 Division Street, Campbell, CA 95008-6906 Tel: 408 960 0370 Fax: 408 960 0375 Web: www.globalsupply.com</div></div>
REV:		APPROVAL	DATE:	67012		
INITIAL RELEASE		LJA	Mar 14, 2018	ECCN		
				EAR99 = NLR (No License Required)		