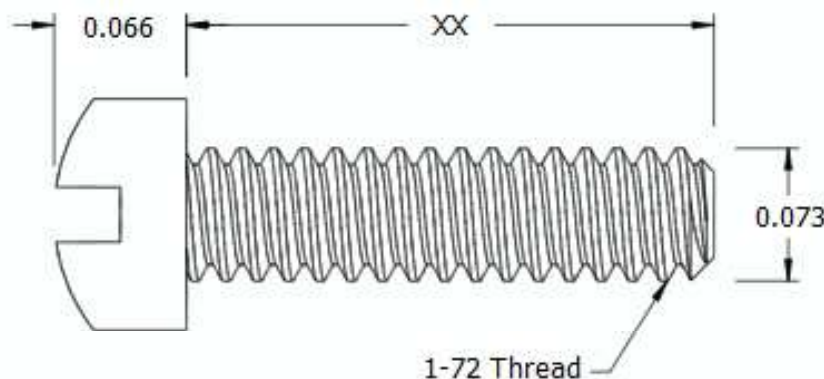
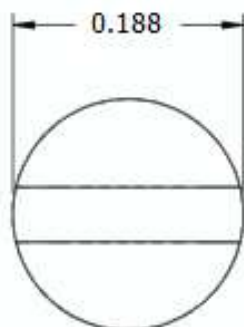



This drawing and the information contained herein are the confidential and proprietary property of Global Supply LLC



PART NUMBER	LENGTH
1F8MIFSP	1/8
1F12MIFSP	3/16
1F16MIFSP	1/4
1F20MIFSP	5/16
1F24MIFSP	3/8
1F32MIFSP	1/2
1F40MIFSP	5/8
1F48MIFSP	3/4
1F56MIFSP	7/8
1F64MIFSP	1

NOTES:

1. INTERPRET DRAWINGS PER ASME Y14.5M-1994 STANDARD.
2. DIMENSIONS & TOLERANCES PER ANSI/ASME B18.6.3.
3. ROHS AND REACH COMPLIANT

DRAWING SCALE:			MATERIAL:		DESCRIPTION:	
STANDARD			STAINLESS STEEL		1-72 SLOTTED FILLISTER HEAD MACHINE SCREW	
TOLERANCES: <i>Unless specified otherwise, all dimensions are in inches</i>		x.xxx +/- 0.005 x.xx +/- 0.010 x.x +/- 0.010		FINISH:		
		PASSIVATE		PART NUMBER:		
				1FXXMIFSP		
DRAWN BY:		L CLARY		FSCM No.		
REV:		APPROVAL		DATE:		
INITIAL RELEASE		LJA		Jul 11, 2018		
				ECCN		
				EAR99 = NLR (No License Required)		
<div><div><div>Global Supply LLC</div><div>WORLDWIDE SUPPLIER OF ELECTRONIC HARDWARE, FASTENERS & COMPONENTS</div><div>500 Division Street, Campbell, CA 95008-6906 Tel: 408 960 0370 Fax: 408 960 0375 Web: www.globalsupply.com</div></div></div>						