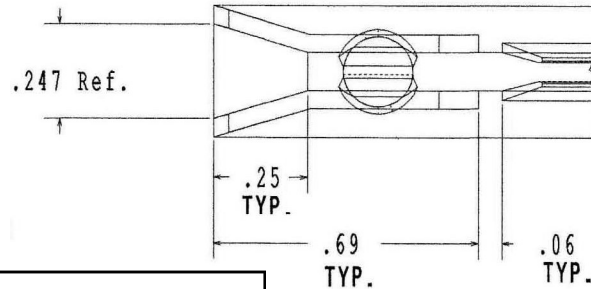
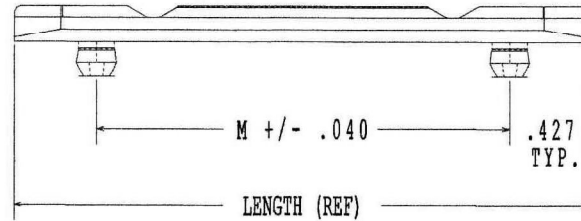
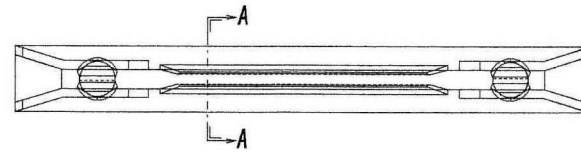
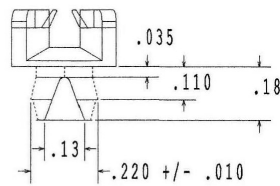
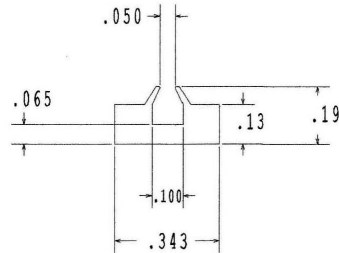



This drawing and the information contained herein are the confidential and proprietary property of Global Supply LLC



PART NUMBER	LENGTH
LENGTH	X=(REF)
2600-6-Y	3
2600-8-Y	4
2600-10-Y	5
2600-12-Y	6
	"M"
2600-6-Y	2.125
2600-8-Y	3.125
2600-10-Y	4.125
2600-12-Y	5.125

Y= Color
1 Red
2 Blue
3 Green
4 Yellow
5 Black
6 Orange
7 Violet

NOTES:
 1. Mounting Holes: 0.188 +/- 0.002, 0.188 x 0.280 rear hole
 2. Mounting Material Thickness: 0.047 - 0.090
 3. ROHS and REACH compliant

DRAWING SCALE: STANDARD		MATERIAL: POLYAMIDE (NYLON) UL 94V-2	DESCRIPTION: 2600 SERIES PCB CARD GUIDE
TOLERANCES: <i>Unless specified otherwise, all dimensions are in inches</i>	x.xxx +/- 0.100 x.xx +/- 0.100 x.x +/- 0.100	FINISH: NONE	PART NUMBER: 2600-X-Y
DRAWN BY: L.CLARY	FSCM No. 67012		 Global Supply LLC WORLDWIDE SUPPLIER OF ELECTRONIC HARDWARE, FASTENERS & COMPONENTS <small>500 Division Street, Campbell, CA 95008-6906 Tel: 408 960 0370 Fax: 408 960 0375 Web: www.globalsupply.com</small>
REV:	APPROVAL	DATE:	
INITIAL RELEASE	LJA	Feb 15, 2019	
		ECCN EAR99 = NLR (No License Required)	