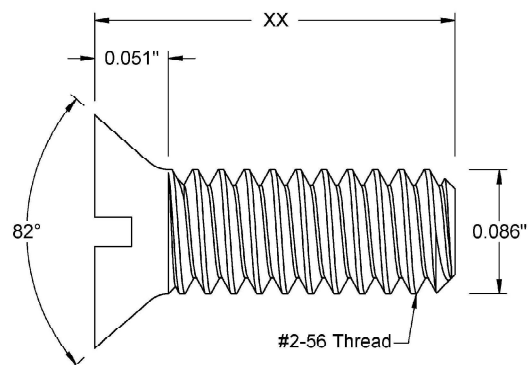
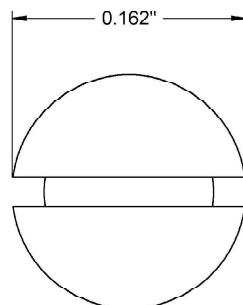



This drawing and the information contained herein are the confidential and proprietary property of Global Supply LLC



PART NUMBER	LENGTH
2C8MI8B	1/8
2C12MI8B	3/16
2C16MI8B	1/4
2C20MI8B	5/16
2C24MI8B	3/8
2C28MI8B	7/16
2C32MI8B	1/2
2C40MI8B	5/8
2C48MI8B	3/4
2C56MI8B	7/8
2C64MI8B	1

NOTES:
 1. INTERPRET DRAWINGS PER ASME Y14.5M-1994 STANDARD.
 2. DIMENSIONS & TOLERANCES PER ANSI/ASME B18.6.3
 3. ROHS AND REACH COMPLIANT

DRAWING SCALE:			MATERIAL:		DESCRIPTION:	
STANDARD			BRASS		#2-56 FLAT SLOT 82° HEAD MACHINE SCREW	
TOLERANCES: <i>Unless specified otherwise, all dimensions are in inches</i>		x.xxx +/- 0.005 x.xx +/- 0.010 x.x +/- 0.010		FINISH:		PART NUMBER:
		PLAIN				2CXXMI8B
DRAWN BY:		L.CLARY		FSCM No.		<div><div>Global Supply LLC</div><div>WORLDWIDE SUPPLIER OF ELECTRONIC HARDWARE, FASTENERS & COMPONENTS</div><div>500 Division Street, Campbell, CA 95008-6906 Tel: 408 960 0370 Fax: 408 960 0375 Web: www.globalsupply.com</div></div>
REV:		APPROVAL		DATE:		
INITIAL RELEASE		LJA		Apr 5, 2018		
				ECCN		
				EAR99 = NLR (No License Required)		