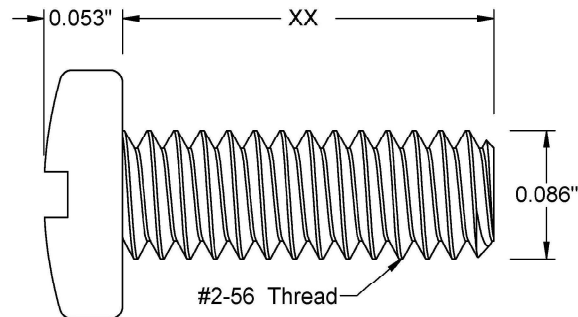
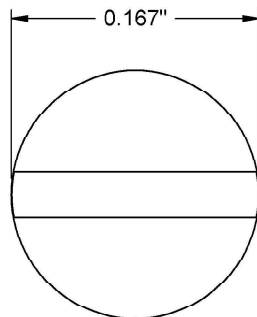



This drawing and the information contained herein are the confidential and proprietary property of Global Supply LLC



PART NUMBER	LENGTH
2C8MIP23	1/8
2C12MIP23	3/16
2C16MIP23	1/4
2C20MIP23	5/16
2C24MIP23	3/8
2C28MIP23	7/16
2C32MIP23	1/2
2C40MIP23	5/8
2C48MIP23	3/4
2C56MIP23	7/8
2C64MIP23	1

NOTES:

1. INTERPRET DRAWINGS PER ASME Y14.5M-1994 STANDARD.
2. DIMENSIONS & TOLERANCES PER ANSI/ASME B18.6.3.
3. ROHS AND REACH COMPLIANT

DRAWING SCALE:			MATERIAL:		DESCRIPTION:	
STANDARD			STEEL		#2-56 SLOTTED PAN HEAD MACHINE SCREW	
TOLERANCES: <i>Unless specified otherwise, all dimensions are in inches</i>		x.xxx +/- 0.005	FINISH:		PART NUMBER:	
		x.xx +/- 0.010	ZINC CLEAR RoHS		2CXXMIP23	
		x.x +/- 0.010				
DRAWN BY:		L.CLARY		FSCM No.		<div><div>Global Supply LLC</div><div>WORLDWIDE SUPPLIER OF ELECTRONIC HARDWARE, FASTENERS & COMPONENTS</div><div>500 Division Street, Campbell, CA 95008-6906 Tel: 408 960 0370 Fax: 408 960 0375 Web: www.globalsupply.com</div></div>
REV:		APPROVAL	DATE:	67012		
INITIAL RELEASE		LJA	Apr 6, 2018	ECCN		
				EAR99 = NLR (No License Required)		