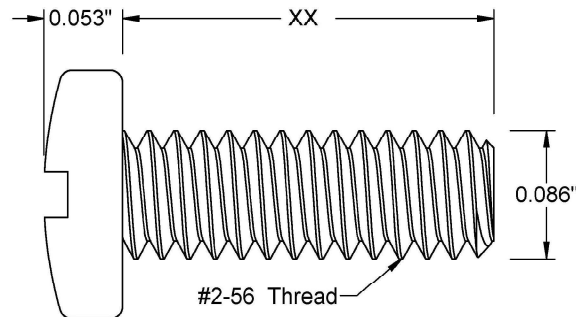
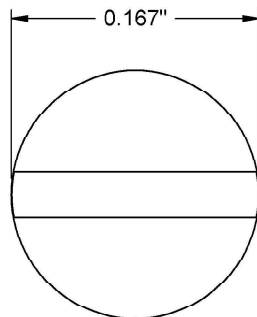



This drawing and the information contained herein are the confidential and proprietary property of Global Supply LLC



PART NUMBER	LENGTH
2C4MIPN	1/16
2C6MIPN	3/32
2C8MIPN	1/8
2C10MIPN	5/32
2C12MIPN	3/16
2C16MIPN	1/4
2C18MIPN	9/32
2C20MIPN	5/16
2C24MIPN	3/8
2C25MIPN	25/64
2C28MIPN	7/16
2C32MIPN	1/2
2C36MIPN	9/16

NOTES:

1. INTERPRET DRAWINGS PER ASME Y14.5M-1994 STANDARD.
2. DIMENSIONS & TOLERANCES PER ANSI/ASME B18.6.3.
3. ROHS AND REACH COMPLIANT

DRAWING SCALE:			MATERIAL:		DESCRIPTION:	
STANDARD			NYLON		#2-56 SLOTTED PAN HEAD MACHINE SCREW	
TOLERANCES: <i>Unless specified otherwise, all dimensions are in inches</i>		x.xxx +/- 0.005 x.xx +/- 0.010 x.x +/- 0.010	FINISH:		PART NUMBER:	
			PLAIN		2CXXMIPN	
DRAWN BY:		L.CLARY		FSCM No.		<div></div> <div>Global Supply LLC</div> <div>WORLDWIDE SUPPLIER OF ELECTRONIC HARDWARE, FASTENERS & COMPONENTS</div> <div>500 Division Street, Campbell, CA 95008-6906 Tel: 408 960 0370 Fax: 408 960 0375 Web: www.globalsupply.com</div>
REV:		APPROVAL	DATE:	67012		
INITIAL RELEASE		LJA	Apr 6, 2018			
				ECCN		
				EAR99 = NLR (No License Required)		