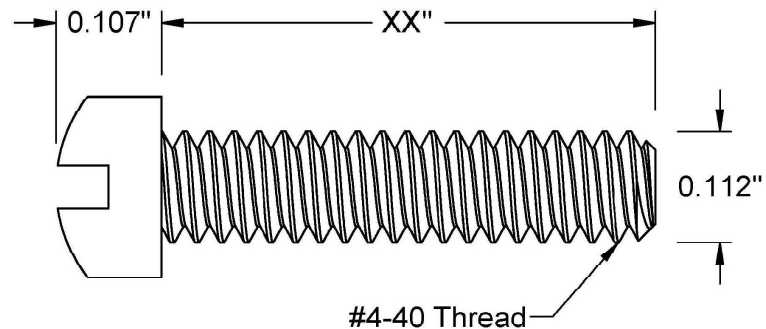
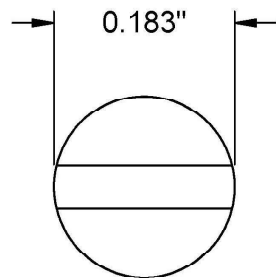



This drawing and the information contained herein are the confidential and proprietary property of Global Supply LLC



PART NUMBER	LENGTH
4C8MIF2Z	1/8
4C12MIF2Z	3/16
4C16MIF2Z	1/4
4C20MIF2Z	5/16
4C24MIF2Z	3/8
4C28MIF2Z	7/16
4C32MIF2Z	1/2
4C40MIF2Z	5/8
4C48MIF2Z	3/4
4C56MIF2Z	7/8
4C64MIF2Z	1

NOTES:

1. INTERPRET DRAWINGS PER ASME Y14.5M-1994 STANDARD.
2. DIMENSIONS & TOLERANCES PER ANSI/ASME B18.6.3

DRAWING SCALE:			MATERIAL:		DESCRIPTION:	
STANDARD			STEEL		#4-40 FILLISTER HEAD SLOTTED MACHINE SCREW	
TOLERANCES: <i>Unless specified otherwise, all dimensions are in inches</i>		x.xxx +/- 0.005 x.xx +/- 0.010 x.x +/- 0.010	FINISH:		PART NUMBER:	
			ZINC I		4CXXMIF2Z	
DRAWN BY:		L.CLARY		FSCM No. 67012		<div></div> <div>Global Supply LLC</div> <div>WORLDWIDE SUPPLIER OF ELECTRONIC HARDWARE, FASTENERS & COMPONENTS</div> <div><small>500 Division Street, Campbell, CA 95008-6906 Tel: 408 960 0370 Fax: 408 960 0375 Web: www.globalsupply.com</small></div>
REV:		APPROVAL	DATE:			
INITIAL RELEASE		LJA	Mar 27, 2018	ECCN EAR99 = NLR (No License Required)		