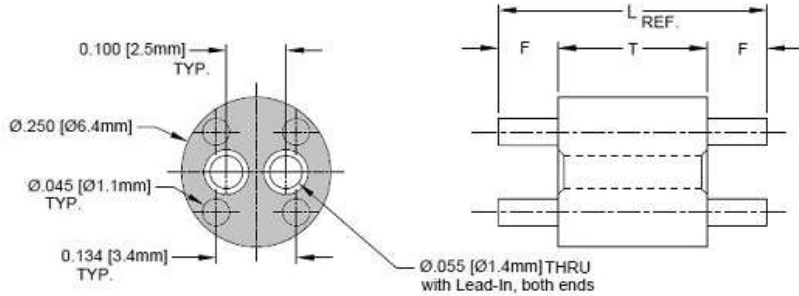



This drawing and the information contained herein are the confidential and proprietary property of Global Supply LLC



Part No.	L	T	F	Part No.	L	T	F	Part No.	L	T	F
5900-050	.050(1.3)	.030 (.76)	.010(.25)	5900-300	.300(7.6)	.150(3.8)	.075(1.9)	5900-590	.590(15.0)	.490(12.4)	.050(1.3)
5900-060	.060(1.5)	.030 (.76)	.015(.38)	5900-310	.310(7.9)	.150(3.8)	.080(2.0)	5900-610	.610(15.5)	.490(12.4)	.060(1.5)
5900-070	.070(1.8)	.030 (.76)	.020(.51)	5900-320	.320(8.1)	.150(3.8)	.085(2.2)	5900-630	.630(16.0)	.490(12.4)	.070(1.8)
5900-080	.080(2.0)	.030 (.76)	.025(.64)	5900-330	.330(8.4)	.150(3.8)	.090(2.3)	5900-650	.650(16.5)	.490(12.4)	.080(2.0)
5900-090	.090(2.3)	.030 (.76)	.030(.76)	5900-340	.340(8.6)	.150(3.8)	.095(2.4)	5900-670	.670(17.0)	.490(12.4)	.090(2.3)
5900-100	.100(2.5)	.030 (.76)	.035(.89)	5900-350	.350(8.9)	.150(3.8)	.100(2.5)	5900-690	.690(17.5)	.490(12.4)	.100(2.5)
5900-110	.110(2.8)	.030 (.76)	.040(1.0)	5900-350T	.350(8.9)	.300(7.6)	.025(.64)	5900-700	.700(17.8)	.680(17.3)	.010(.25)
5900-120	.120(3.0)	.030 (.76)	.045(1.1)	5900-360	.360(9.1)	.300(7.6)	.030(.76)	5900-720	.720(18.3)	.680(17.3)	.020(.51)
5900-130	.130(3.3)	.030 (.76)	.050(1.3)	5900-370	.370(9.4)	.300(7.6)	.035(.89)	5900-740	.740(18.8)	.680(17.3)	.030(.76)
5900-140	.140(3.6)	.030 (.76)	.055(1.4)	5900-380	.380(9.7)	.300(7.6)	.040(1.0)	5900-760	.760(19.3)	.680(17.3)	.040(1.0)
5900-150	.150(3.8)	.030 (.76)	.060(1.5)	5900-390	.390(9.9)	.300(7.6)	.045(1.1)	5900-780	.780(19.8)	.680(17.3)	.050(1.3)
5900-160	.160(4.1)	.030 (.76)	.065(1.7)	5900-400	.400(10.2)	.300(7.6)	.050(1.3)	5900-800	.800(20.3)	.680(17.3)	.060(1.5)
5900-170	.170(4.3)	.030 (.76)	.070(1.8)	5900-410	.410(10.4)	.300(7.6)	.055(1.4)	5900-820	.820(20.8)	.680(17.3)	.070(1.8)
5900-180	.180(4.6)	.030 (.76)	.075(1.9)	5900-420	.420(10.7)	.300(7.6)	.060(1.5)	5900-840	.840(21.3)	.680(17.3)	.080(2.0)
5900-190	.190(4.8)	.030 (.76)	.080(2.0)	5900-430	.430(10.9)	.300(7.6)	.065(1.7)	5900-860	.860(21.8)	.680(17.3)	.090(2.3)
5900-200	.200(5.1)	.030 (.76)	.085(2.2)	5900-440	.440(11.2)	.300(7.6)	.070(1.8)	5900-880	.880(22.4)	.680(17.3)	.100(2.5)
5900-200T	.200(5.1)	.150(3.8)	.025(.64)	5900-450	.450(11.4)	.300(7.6)	.075(1.9)	5900-900	.900(22.9)	.880(22.4)	.010(.25)
5900-210	.210(5.3)	.150(3.8)	.030(.76)	5900-460	.460(11.7)	.300(7.6)	.080(2.0)	5900-920	.920(23.4)	.880(22.4)	.020(.51)
5900-220	.220(5.6)	.150(3.8)	.035(.89)	5900-470	.470(11.9)	.300(7.6)	.085(2.2)	5900-940	.940(23.9)	.880(22.4)	.030(.76)
5900-230	.230(5.8)	.150(3.8)	.040(1.0)	5900-480	.480(12.2)	.300(7.6)	.090(2.3)	5900-960	.960(24.4)	.880(22.4)	.040(1.0)
5900-240	.240(6.1)	.150(3.8)	.045(1.1)	5900-490	.490(12.4)	.300(7.6)	.095(2.4)	5900-980	.980(24.9)	.880(22.4)	.050(1.3)
5900-250	.250(6.4)	.150(3.8)	.050(1.3)	5900-500	.500(12.7)	.300(7.6)	.100(2.5)	5900-1000	1.000(25.4)	.880(22.4)	.060(1.5)
5900-260	.260(6.6)	.150(3.8)	.055(1.4)	5900-510	.510(13.0)	.490(12.4)	.010(.25)	5900-1020	1.020(25.9)	.880(22.4)	.070(1.8)
5900-270	.270(6.9)	.150(3.8)	.060(1.5)	5900-530	.530(13.5)	.490(12.4)	.020(.51)	5900-1040	1.040(26.4)	.880(22.4)	.080(2.0)
5900-280	.280(7.1)	.150(3.8)	.065(1.7)	5900-550	.550(14.0)	.490(12.4)	.030(.76)	5900-1060	1.060(26.9)	.880(22.4)	.090(2.3)
5900-290	.290(7.4)	.150(3.8)	.070(1.8)	5900-570	.570(14.5)	.490(12.4)	.040(1.0)	5900-1080	1.080(27.4)	.880(22.4)	.100(2.5)

<b>DRAWING SCALE:</b>		<b>MATERIAL:</b>		<b>DESCRIPTION:</b>							
<b>STANDARD</b>		<b>NYLON</b>		<b>T1 AND T 1 3/4 LED MOUNTS</b>							
<b>TOLERANCES:</b> <i>Unless specified otherwise, all dimensions are in inches</i>		<b>FINISH:</b>		<b>PART NUMBER:</b>							
<table border="0"> <tr><td>x.xxx</td><td>+/- 0.005</td></tr> <tr><td>x.xx</td><td>+/- 0.010</td></tr> <tr><td>x.x</td><td>+/- 0.010</td></tr> </table>		x.xxx	+/- 0.005	x.xx	+/- 0.010	x.x	+/- 0.010	<b>PLAIN</b>		<b>5900-XXX</b>	
x.xxx	+/- 0.005										
x.xx	+/- 0.010										
x.x	+/- 0.010										
<b>DRAWN BY:</b>		<b>FCSM No.</b>		 <b>Global Supply LLC</b> WORLDWIDE SUPPLIER OF ELECTRONIC HARDWARE, FASTENERS & COMPONENTS <small>500 Division Street, Campbell, CA 95008-6906          Tel: 408 960 0370 Fax: 408 960 0375 Web: www.globalsupply.com</small>							
<b>L.CLARY</b>						<b>67012</b>					
<b>REV:</b>	<b>APPROVAL</b>	<b>DATE:</b>									
<b>INITIAL</b>	<b>LJA</b>	<b>Jul 15, 2016</b>									
		<b>ECCN</b>									
		<b>EAR99 = NLR (No License Required)</b>									