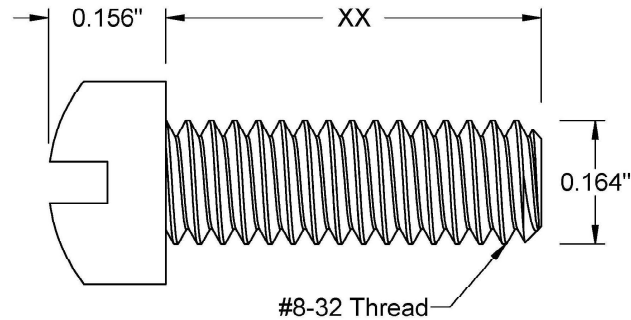
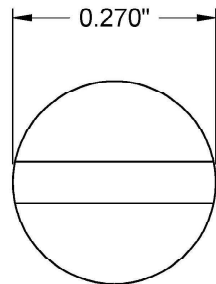



This drawing and the information contained herein are the confidential and proprietary property of Global Supply LLC



PART NUMBER	LENGTH
8C8MIF2Z	1/8
8C12MIF2Z	3/16
8C16MIF2Z	1/4
8C20MIF2Z	5/16
8C24MIF2Z	3/8
8C28MIF2Z	7/16
8C32MIF2Z	1/2
8C40MIF2Z	5/8
8C48MIF2Z	3/4
8C56MIF2Z	7/8
8C64MIF2Z	1

NOTES:

1. INTERPRET DRAWINGS PER ASME Y14.5M-1994 STANDARD.
2. DIMENSIONS & TOLERANCES PER ANSI/ASME B18.6.3.

DRAWING SCALE:			MATERIAL:		DESCRIPTION:	
STANDARD			STEEL		#8-32 SLOT FILLISTER MACHINE SCREW	
TOLERANCES: <i>Unless specified otherwise, all dimensions are in inches</i>		x.xxx +/- 0.005 x.xx +/- 0.010 x.x +/- 0.010	FINISH: ZINC I		PART NUMBER: 8CXXMIF2Z	
DRAWN BY:		L.CLARY		<div><div>Global Supply LLC</div><div>WORLDWIDE SUPPLIER OF ELECTRONIC HARDWARE, FASTENERS & COMPONENTS</div><div><small>500 Division Street, Campbell, CA 95008-6906 Tel: 408 960 0370 Fax: 408 960 0375 Web: www.globalsupply.com</small></div></div>		
REV:		APPROVAL	DATE:			
INITIAL RELEASE		LJA	May 8, 2018			
FSCM No. 67012						
ECCN						
EAR99 = NLR (No License Required)						