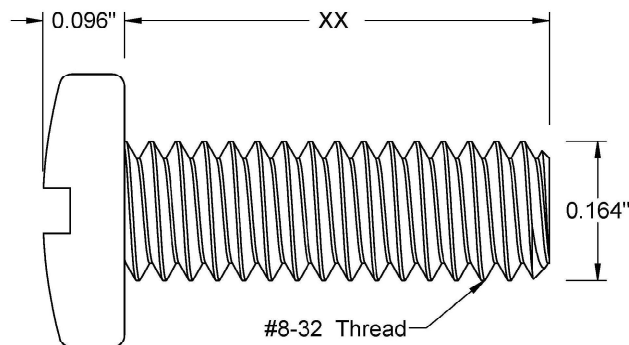
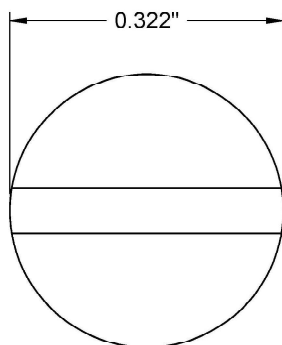



This drawing and the information contained herein are the confidential and proprietary property of Global Supply LLC



PART NUMBER	LENGTH
8C8MIP2B	1/8
8C12MIP2B	3/16
8C16MIP2B	1/4
8C20MIP2B	5/16
8C24MIP2B	3/8
8C28MIP2B	7/16
8C32MIP2B	1/2
8C40MIP2B	5/8
8C48MIP2B	3/4
8C56MIP2B	7/8
8C64MIP2B	1

#### NOTES:

1. INTERPRET DRAWINGS PER ASME Y14.5M-1994 STANDARD.
2. DIMENSIONS & TOLERANCES PER ANSI/ASME B18.6.3.
3. ROHS AND REACH COMPLIANT

DRAWING SCALE:			MATERIAL:		DESCRIPTION:		
STANDARD			STEEL		#8-32 PAN SLOTTED MACHINE SCREW		
TOLERANCES: <i>Unless specified otherwise, all dimensions are in inches</i>		x.xxx +/- 0.005 x.xx +/- 0.010 x.x +/- 0.010		FINISH:		PART NUMBER:	
				ZINC BLACK		8CXXMIP2B	
DRAWN BY:		L.CLARY		FSCM No.		<div><div>Global Supply LLC</div><div>WORLDWIDE SUPPLIER OF ELECTRONIC HARDWARE, FASTENERS &amp; COMPONENTS</div><div>500 Division Street, Campbell, CA 95008-6906 Tel: 408 960 0370 Fax: 408 960 0375 Web: www.globalsupply.com</div></div>	
REV:		APPROVAL		DATE:			
INITIAL RELEASE		LJA		May 8, 2018			
				ECCN			
				EAR99 = NLR (No License Required)			