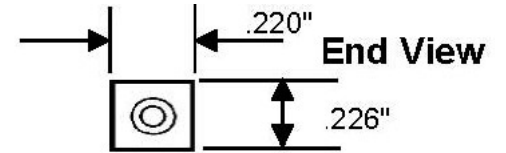
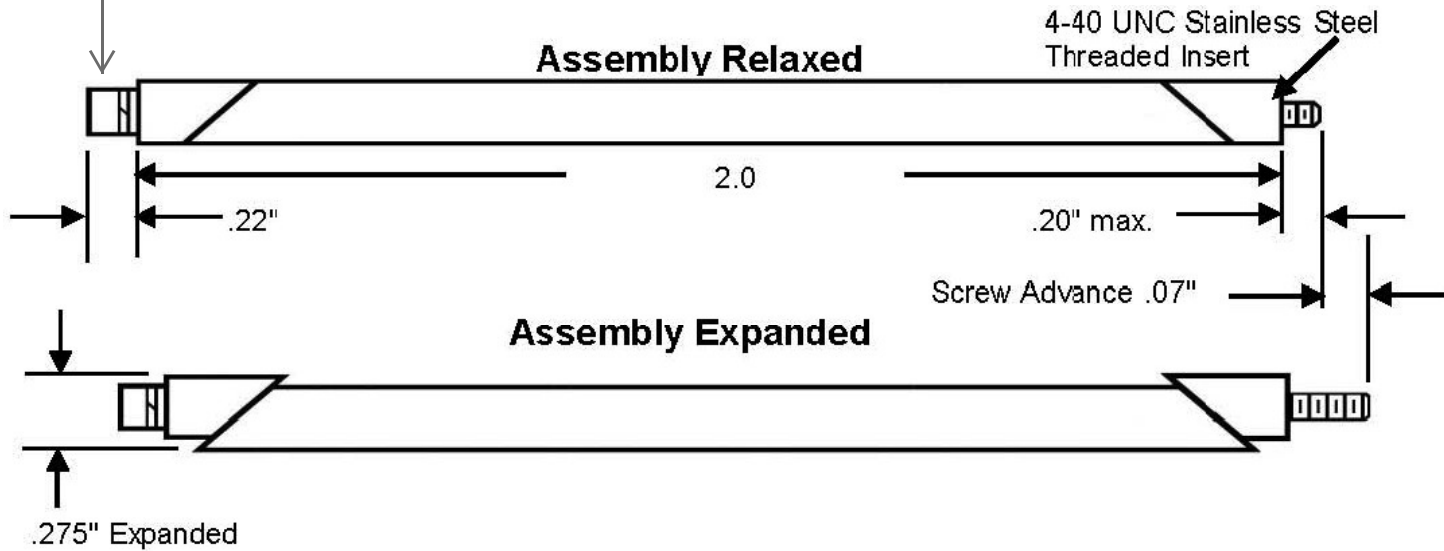


This drawing and the information contained herein are the confidential and proprietary property of Global Supply LLC




NOTE: 4-40 Stainless Steel Screw



NOTES:

1. INTERPRET DRAWING PER ASME Y14.5M-1994
2. ROHS AND REACH COMPLIANT

| | | | |
|---|--|--|--|
| DRAWING SCALE: | | MATERIAL: | DESCRIPTION: |
| STANDARD | | ALUMINUM | WEDGE LOCK, SERIES ACG1 0.220 (5.60mm) x 0.225 (5.72mm) |
| TOLERANCES: <i>Unless specified otherwise, all dimensions are in inches</i> | x.xxx +/- 0.005 x.xx +/- 0.010 x.x +/- 0.010 | FINISH: Chem-Film Gold per MIL-C-5541 | PART NUMBER: ACG1-2.0-CFG-E |
| DRAWN BY: | L.CLARY | |  <p>Global Supply LLC WORLDWIDE SUPPLIER OF ELECTRONIC HARDWARE, FASTENERS & COMPONENTS 500 Division Street, Campbell, CA 95008-6906 Tel: 408 960 0370 Fax: 408 960 0375 Web: www.globalsupply.com</p> |
| REV: | APPROVAL | DATE: | |
| A | LJA | Jan 29, 2014 | |
| B | LJA | Feb 15, 2019 | |
| | | | |
| | | FCSM No. 67012 | |
| | | ECCN | |
| | | EAR99 = NLR (No License Required) | |