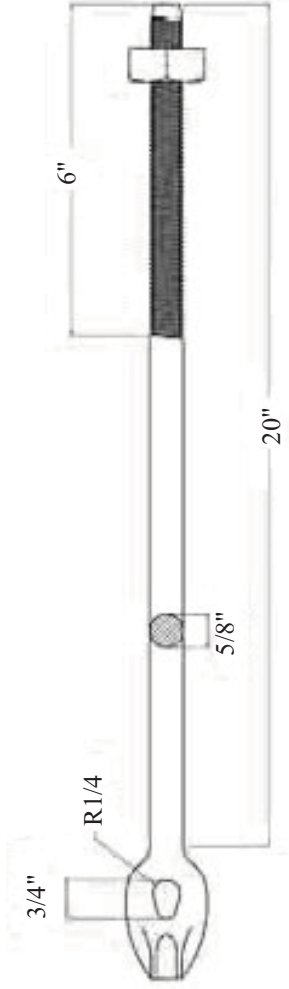



This drawing and the information contained herein are the confidential and proprietary property of Global Supply LLC



DRAWING SCALE:		STANDARD		MATERIAL:		DESCRIPTION:	
TOLERANCES: <i>Unless specified otherwise, all dimensions are in inches</i>	X.XXX X.XX X.X	+/- 0.005 +/- 0.010 +/- 0.010	STEEL		5/8 THIMBLE EYE BOLT, STRAIGHT, CONE POINT, W/SQUARE NUT		
REV:	APPROVAL	DATE:	FINISH:		PART NUMBER:		
INITIAL	LJA	Apr 6, 2015	H.D.G.		5852		
DRAWN BY:	L. CLARY		FCSM No.		 Global Supply LLC WORLDWIDE SUPPLIER OF ELECTRONIC HARDWARE, FASTENERS & COMPONENTS <small>500 Division Street, Campbell, CA 95008-6906 Tel: 408 960 0370 Fax: 408 960 0375 Web: www.globalupply.com</small>		
			67012				
			ECCN				
			EAR99 = NLR (No License Required)				